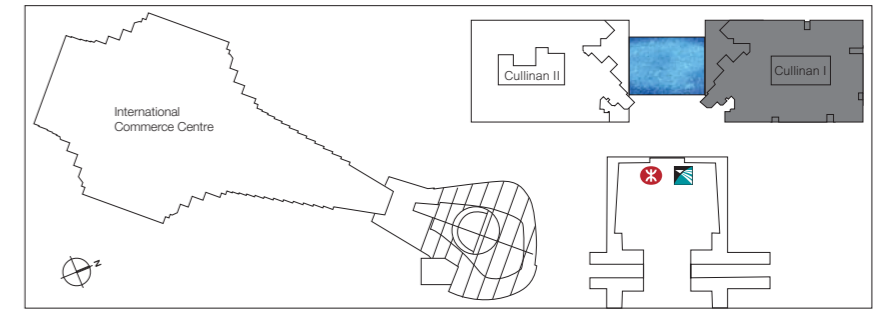


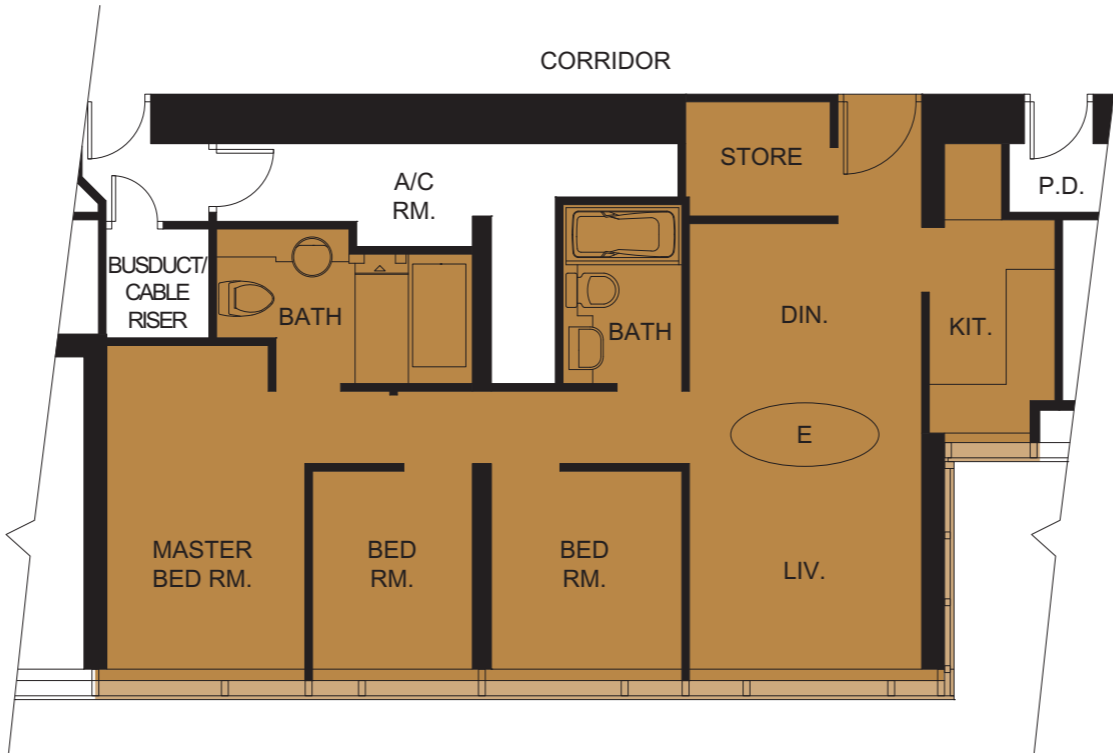
Star Sky
15th-28th
 Flat E Floor Plan



12'-2 1/8"	2'-9 1/8"	5'-3 3/8"	10'-6"	5'-10 7/8"
3.71M	0.84M	1.61M	3.2M	1.8M

- TOP ROOF
- 90/F
- 89/F
- 88/F
- 87/F
- 86/F
- 85/F
- 83/F
- 82/F
- 81/F
- 80/F
- 79/F
- 78/F
- 77/F
- 76/F
- 75/F
- 73/F
- 72/F
- 71/F
- 70/F
- 68/F
- 67/F
- 66/F M&E FLOOR
- 65/F REFUGE FLOOR
- 63/F
- 62/F
- 61/F
- 60/F
- 59/F
- 57/F
- 56/F
- 55/F
- 52/F
- 51/F
- 50/F
- 40/F M&E FLOOR
- 39/F REFUGE FLOOR
- 38/F
- 37/F
- 36/F
- 35/F
- 33/F
- 32/F
- 31/F
- 30/F
- 29/F
- 28/F
- 27/F
- 26/F
- 25/F
- 23/F
- 22/F
- 21/F
- 20/F
- 19/F
- 18/F
- 17/F
- 16/F
- 15/F
- 12/F & REFUGE AREA
- TRANSFER PLATE
- 8/F
- CH3/F
- CH2/F
- CH1/F
- L/F
- 3/F
- 2/F
- 1/F
- M/F
- G/F
- B1/F

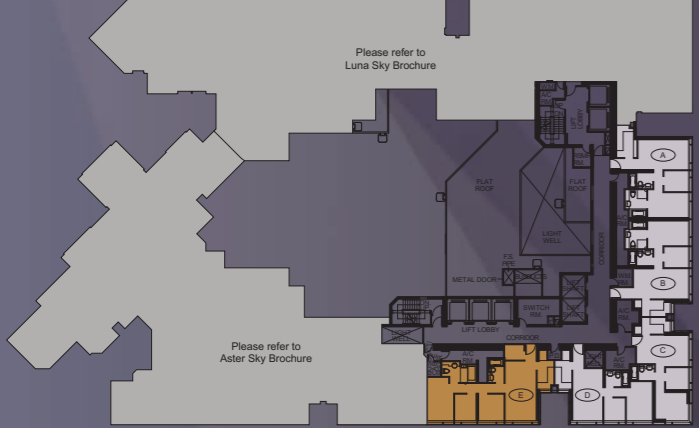
5'-5 3/4"	1.67M
5'-0 1/4"	1.53M
15'-7"	4.75M



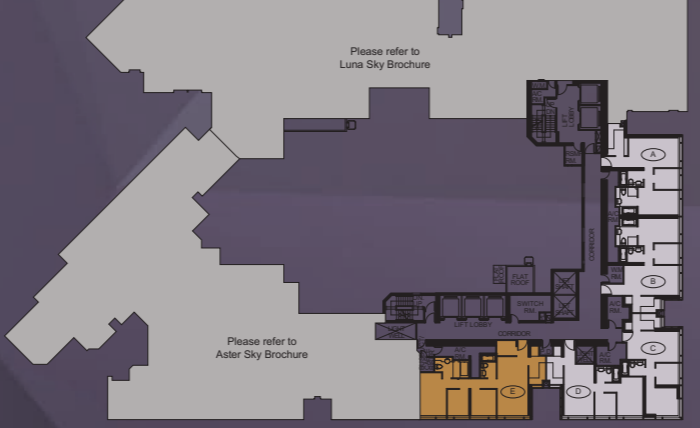
15'-10"	4.825M
10'-3"	3.125M

9'-4 1/4"	7'-8 1/2"	8'-6 3/8"	11'-4 7/8"	4'-6 1/8"
2.85M	2.35M	2.6M	3.475M	1.375M

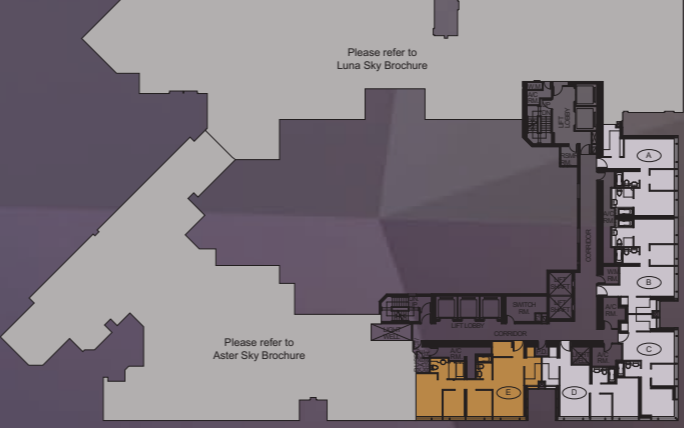
15th Floor Plan



16th Floor Plan

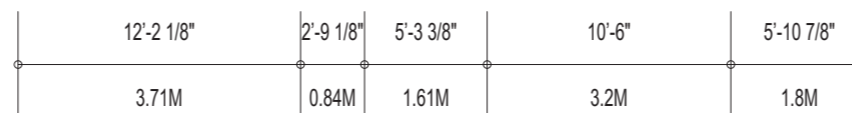
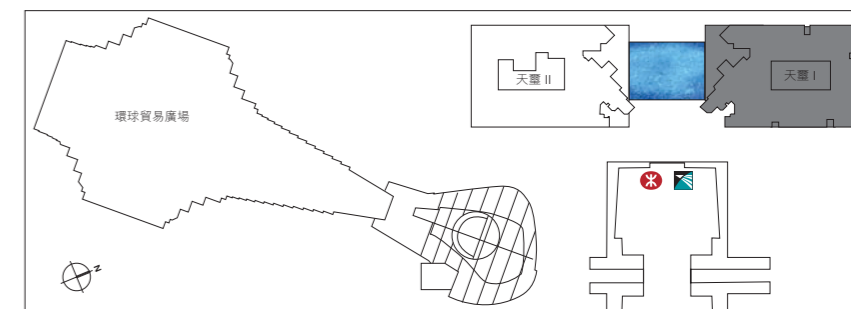


17th-28th Floor Plan



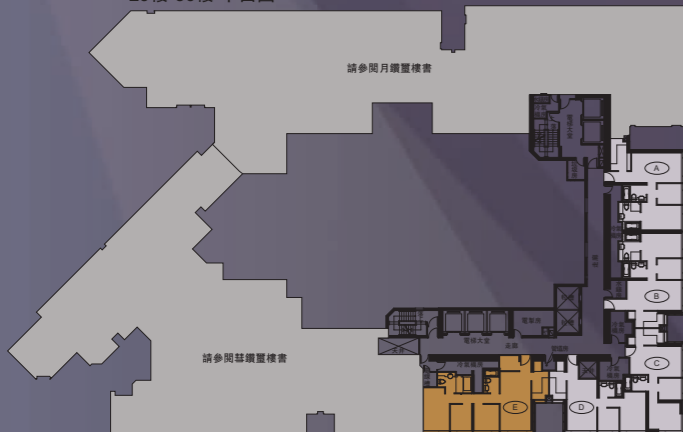
- Notes:
- Flats are on 12/F and above. There is no 13, 14, 24, 34, 41-49, 53, 54, 58, 64, 74 & 84/F. 39 & 65/F are refuge floors, 40 & 66/F are M&E floors.
 - The condensers of the split-type air-conditioners are installed in A/C rooms.
 - Architectural and lighting features are on the external walls of some of the floors and the roofs of the building. The designs of the windows of some flats, and balustrades at flat roofs and/or roofs may vary.
 - Load bearing walls are represented by thick solid lines.
 - The internal areas of flats on upper floors are in general slightly larger than the internal areas of flats on lower floors due to the reducing thickness of structural walls on those floors.
 - There are ceiling bulkheads at living/dining room and bedrooms for the air-conditioning system and/or M&E services of some flats.
 - The internal ceiling height within some flats may vary due to structural or architectural design requirements.
 - All plans are subject to the final approval by the Buildings Department and the Lands Department.
 - The dimensions of the floor plans are all structural dimensions and are for reference only.
 - Potential purchasers are also requested to refer to the model of the Development placed at the sales office to appreciate the physical appearances and architectural features of the Development especially those of or affecting the units they intend to purchase. The aforesaid model is for reference only and shall be subject to the final approved plans by the Buildings Department and the Lands Department.
 - Contents on this page are for reference only. All information shall be subject to the terms and conditions of the formal Agreement for Sale and Purchase. In case of any discrepancy between the English and the Chinese version of the contents of this page, the former shall prevail.

星鑽璽
29樓至
38樓
E單位 平面圖

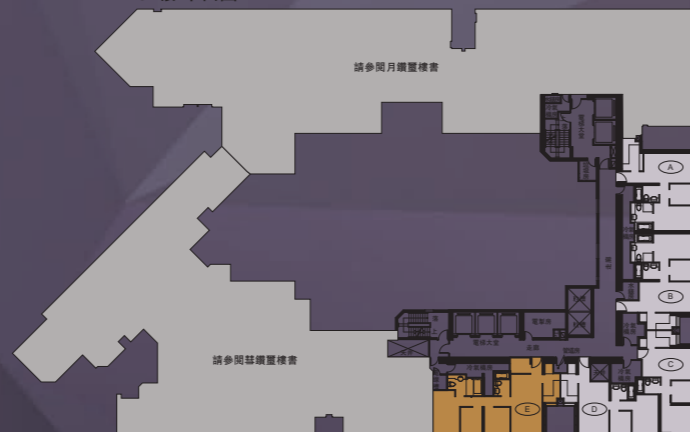


- TOP ROOF
- 90/F
- 89/F
- 88/F
- 87/F
- 86/F
- 85/F
- 83/F
- 82/F
- 81/F
- 80/F
- 79/F
- 78/F
- 77/F
- 76/F
- 75/F
- 73/F
- 72/F
- 71/F
- 70/F
- 68/F
- 67/F
- 66/F M&E FLOOR
- 65/F REFUGE FLOOR
- 63/F
- 62/F
- 61/F
- 60/F
- 59/F
- 58/F
- 57/F
- 56/F
- 55/F
- 52/F
- 51/F
- 50/F
- 40/F M&E FLOOR
- 39/F REFUGE FLOOR
- 38/F
- 37/F
- 36/F
- 35/F
- 33/F
- 32/F
- 31/F
- 30/F
- 29/F
- 28/F
- 27/F
- 26/F
- 25/F
- 23/F
- 22/F
- 21/F
- 20/F
- 19/F
- 18/F
- 17/F
- 16/F
- 15/F
- 12/F & REFUGE AREA
- TRANSFER PLATE
- 8/F
- CH3/F
- CH2/F
- CH1/F
- L/F
- 3/F
- 2/F
- 1/F
- M/F
- G/F
- B1/F

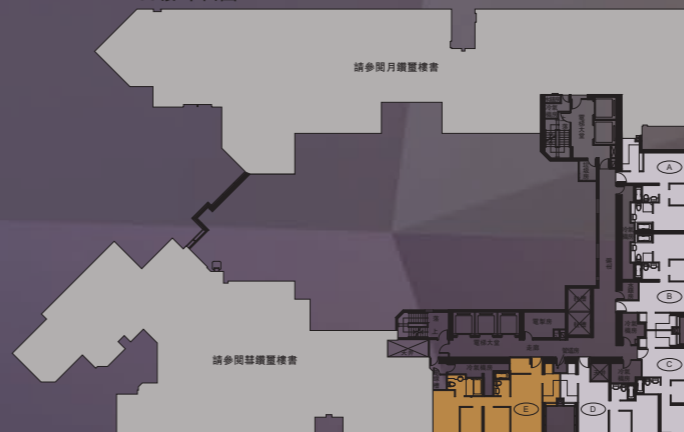
29樓-36樓 平面圖



37樓 平面圖



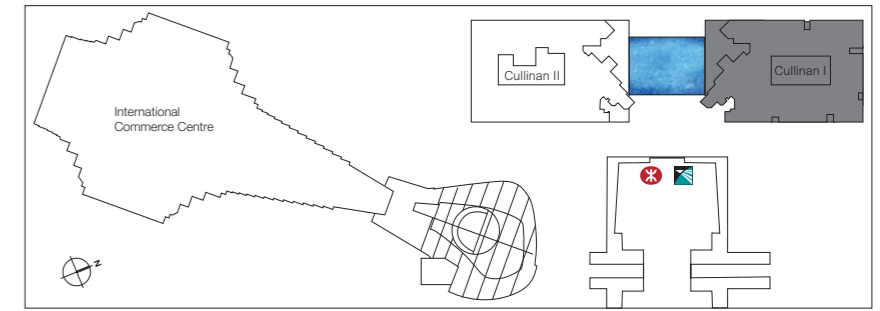
38樓 平面圖



註：

- 單位由12樓開始，不設13、14、24、34、41-49、53、54、58、64、74及84樓。39及65樓為隔火層，40及66樓為機電層。
- 分體式冷氣機的冷凝器設於冷氣機房。
- 部份樓層外牆範圍及大廈天台設有建築裝飾及燈光裝飾；而部份單位窗戶、平台及/或天台欄杆設計略有不同。
- 承力結構牆以粗黑線表示。
- 高層單位的室內面積通常較低層單位稍大，因其承力結構牆比低層單位稍薄。
- 部份單位客/飯廳及睡房之假天花均裝置冷氣及/或其他機電設備。
- 部份單位之天花高度將會因應結構或建築設計上的需要而有差異。
- 詳細訂正圖則以屋宇署及地政總署最後批准之圖則為準。
- 圖中所有量度單位為建築結構尺寸，僅供參考。
- 準買家請參看設置於售樓處之物業模型以了解物業及其有意購買單位之外觀及建築特色，特別是屬於或影響該單位之建築特色。該物業模型僅供參考，一切以屋宇署及地政總署最後批准之圖則為準。
- 本頁內一切內容僅供參考。所有資料均依據正式買賣合約所訂為準。此中文譯本僅作參考，如有歧義，一切內容以英文版本為準。

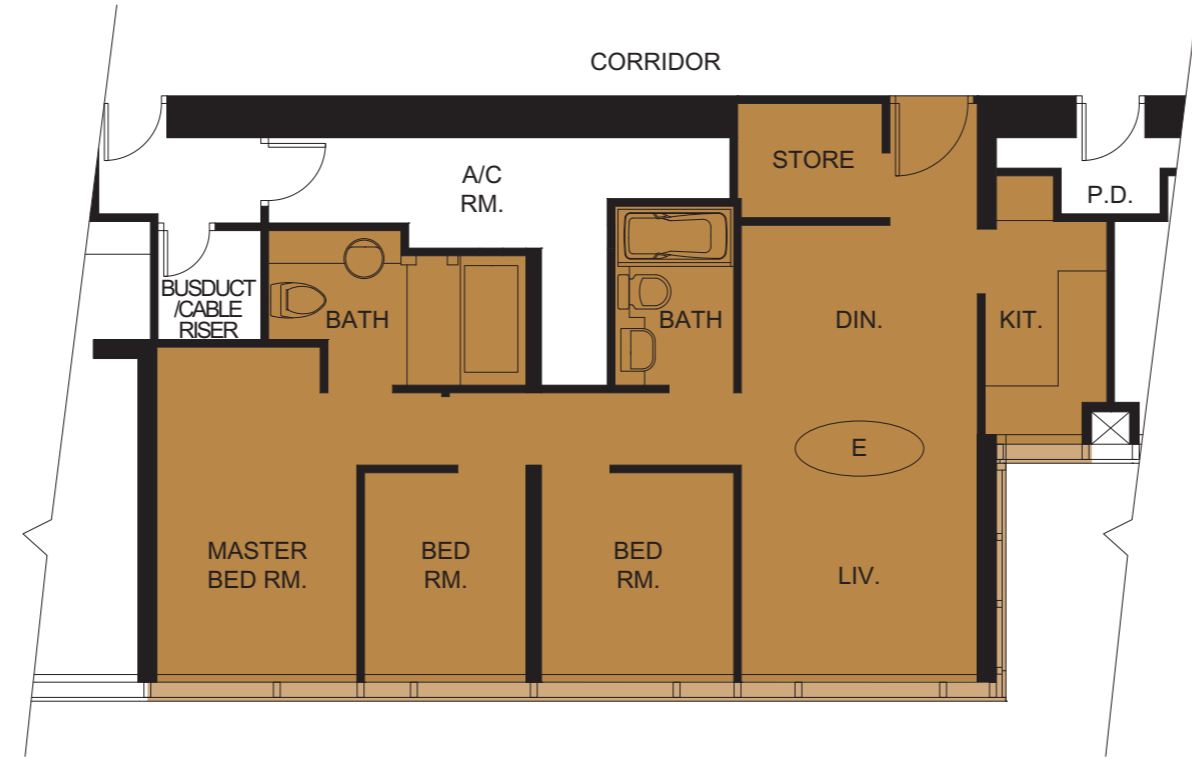
Star Sky
50th-63rd
 Flat E Floor Plan



12'-1 1/8"	2'-10"	5'-3 3/8"	10'-8"	5'-8 7/8"
3.685M	0.865M	1.61M	3.25M	1.75M

- TOP ROOF
- 90/F
- 89/F
- 88/F
- 87/F
- 86/F
- 85/F
- 83/F
- 82/F
- 81/F
- 80/F
- 79/F
- 78/F
- 77/F
- 76/F
- 75/F
- 73/F
- 72/F
- 71/F
- 70/F
- 68/F
- 67/F
- 66/F M&E FLOOR
- 65/F REFUGE FLOOR
- 63/F
- 62/F
- 61/F
- 60/F
- 59/F
- 57/F
- 56/F
- 55/F
- 52/F
- 51/F
- 50/F
- 40/F M&E FLOOR
- 39/F REFUGE FLOOR
- 38/F
- 37/F
- 36/F
- 35/F
- 33/F
- 32/F
- 31/F
- 30/F
- 29/F
- 28/F
- 27/F
- 26/F
- 25/F
- 23/F
- 22/F
- 21/F
- 20/F
- 19/F
- 18/F
- 17/F
- 16/F
- 15/F
- 12/F & REFUGE AREA
- TRANSFER PLATE
- 8/F
- CH3/F
- CH2/F
- CH1/F
- 1/F
- 3/F
- 2/F
- 1/F
- M/F
- G/F
- B1/F

5'-5 3/4"	1.67M
5'-0 1/4"	1.53M
15'-7"	4.75M



15'-10"	4.825M
10'-3"	3.125M

9'-4 1/4"	7'-7 1/2"	8'-7 3/8"	11'-4 7/8"	4'-6 1/8"
2.85M	2.325M	2.625M	3.475M	1.375M

50th Floor Plan



51st-63rd Floor Plan



- Notes:
- Flats are on 12/F and above. There is no 13, 14, 24, 34, 41-49, 53, 54, 58, 64, 74 & 84/F. 39 & 65/F are refuge floors, 40 & 66/F are M&E floors.
 - The condensers of the split-type air-conditioners are installed in A/C rooms.
 - Architectural and lighting features are on the external walls of some of the floors and the roofs of the building. The designs of the windows of some flats, and balustrades at flat roofs and/or roofs may vary.
 - Load bearing walls are represented by thick solid lines.
 - The internal areas of flats on upper floors are in general slightly larger than the internal areas of flats on lower floors due to the reducing thickness of structural walls on those floors.
 - There are ceiling bulkheads at living/dining room and bedrooms for the air-conditioning system and/or M&E services of some flats.
 - The internal ceiling height within some flats may vary due to structural or architectural design requirements.
 - All plans are subject to the final approval by the Buildings Department and the Lands Department.
 - The dimensions of the floor plans are all structural dimensions and are for reference only.
 - Potential purchasers are also requested to refer to the model of the Development placed at the sales office to appreciate the physical appearances and architectural features of the Development especially those of or affecting the units they intend to purchase. The aforesaid model is for reference only and shall be subject to the final approved plans by the Buildings Department and the Lands Department.
 - Contents on this page are for reference only. All information shall be subject to the terms and conditions of the formal Agreement for Sale and Purchase. In case of any discrepancy between the English and the Chinese version of the contents of this page, the former shall prevail.